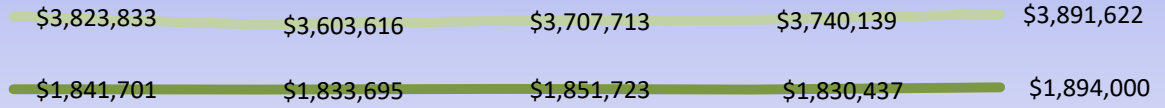


# St. Elizabeth State of the Parish at a Glance

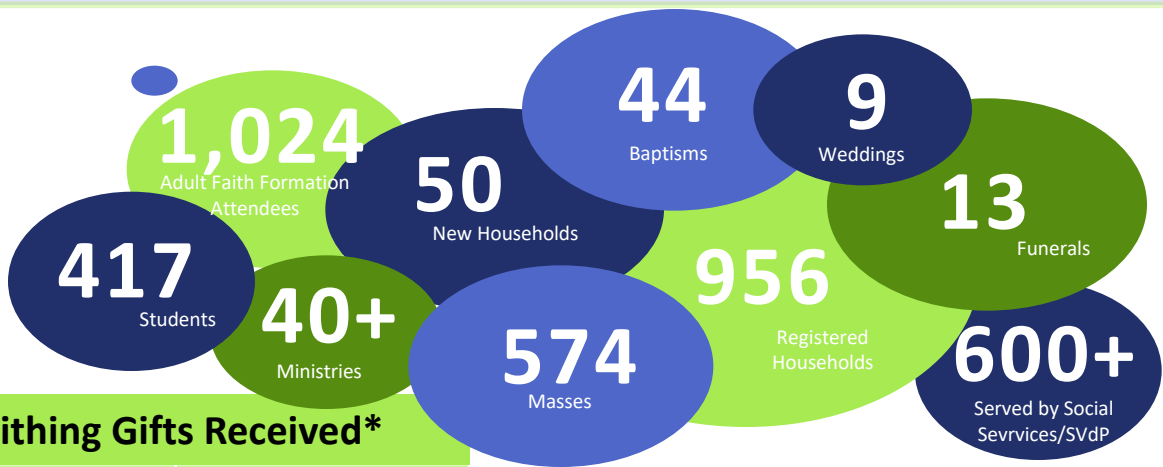
Spring 2020

## Tithing & Expenses 2016 - 2020

— Total Tithing Income    — Total Expenses (including school)



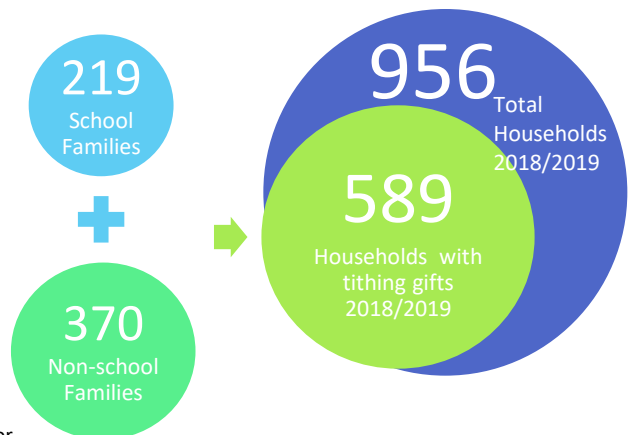
FY2016                      FY2017                      FY2018                      FY2019                      FY2020 (budgeted)



### Tithing Gifts Received\*

Amount	Number of Households
\$10K and above	24
\$9K - \$9,999K	7
\$8K - \$8,999K	6
\$7K - \$7,999K	20
<b>\$6,600</b>	<b>Cost per Student</b>
\$6K	26
\$5K	21
\$4K	32
\$3K	63
\$2K	71
\$1K	122
\$1 - \$999	197
\$0	367

Thank you for all the ways you share your gifts with the St. Elizabeth Community. It truly takes everyone's support to maintain and grow the ministry of St. Elizabeth Catholic Church.



\*Gifts Received per Household for Fiscal Year 18/19